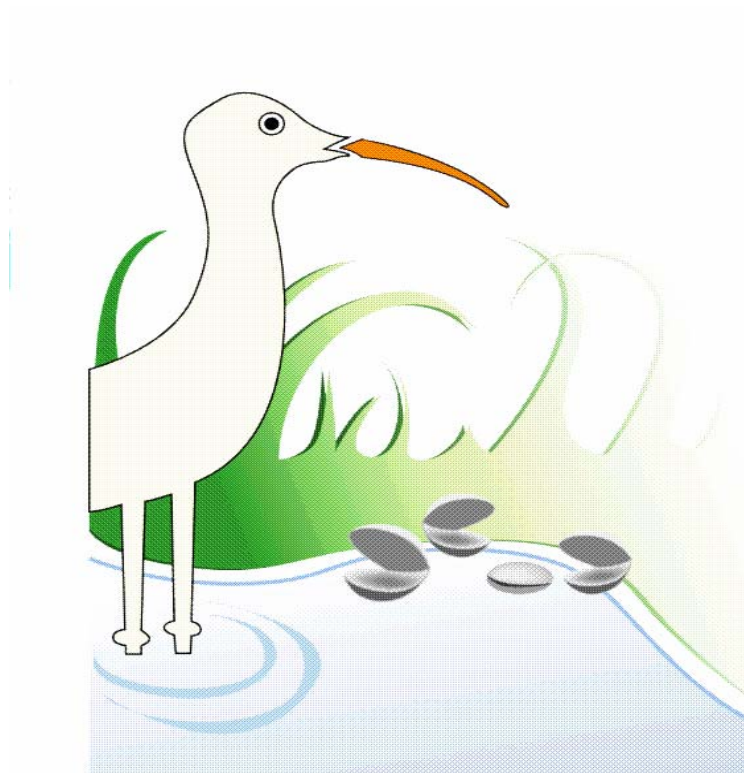
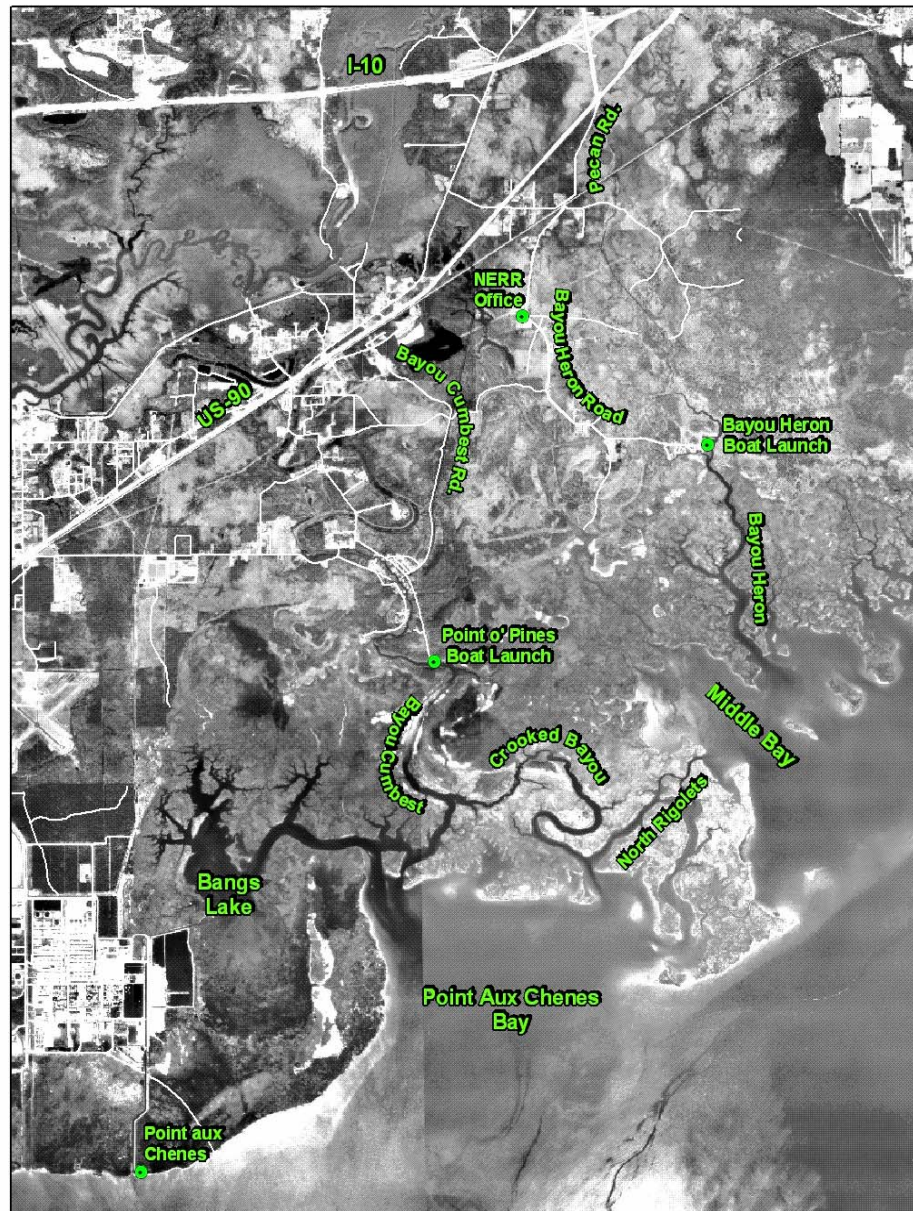


# Grand Bay National Estuarine Research Reserve

## Field Journal



## Grand Bay NERR - Base Map



Grand Bay NERR and surrounding areas

## A Visitor's Field Journal

### Note to Users

This field journal was compiled in order to provide you, our visitors, with species lists of common animals and plants found within the protected wildlands of the Grand Bay National Estuarine Research Reserve and Refuge. We encourage you to cautiously explore these sensitive areas **on foot** when you are out in the field. Many of our coastal habitats such as pine savannas and salt pannes are extremely fragile in nature. Please do not remove or disturb the animals and plants or their parts without proper permits. Remember, take only pictures, and leave as few footprints as possible as you travel through some of Mississippi's most pristine coastal wetlands.

We would like to thank our partners who were directly involved in the development of this field journal. They include the staff of the Mississippi Department of Marine Resources' Grand Bay National Estuarine Research Reserve and Coastal Preserve Programs and The University of Southern Mississippi's J.L. Scott Marine Education Center and Aquarium.

Jennifer Buchanan  
Grand Bay NERR

Shelia A. Brown  
Scott Aquarium

## Animal Checklist

	Animal	Check Off	Date
	<b>Amphibians</b>		
<b>Frogs:</b>			
	Bird-voiced Tree Frog	[ ]	
	Bronze Frog	[ ]	
	Bullfrog	[ ]	
	Dusky Gopher Frog	[ ]	
	Gray Tree Frog	[ ]	
	Green Tree Frog	[ ]	
	Northern Cricket Frog	[ ]	
	Northern Spring Peeper	[ ]	
	Ornate Chorus Frog	[ ]	
	Pig Frog	[ ]	
	Pin Wood Tree Frog	[ ]	
	River Frog	[ ]	
	Southern Chorus Frog	[ ]	
	Southern Leopard Frog	[ ]	
	Squirrel Tree Frog	[ ]	
<b>Toads:</b>			
	Eastern Narrowmouth Toad	[ ]	
	Eastern Spadefoot Toad	[ ]	
	Fowler's Toad	[ ]	
	Oak Toad	[ ]	
	Southern Toad	[ ]	
<b>Salamanders:</b>			
	Alabama Waterdog	[ ]	
	Central Newt	[ ]	
	Dwarf Salamander	[ ]	
	Gulf Coast Mud Salamander	[ ]	
	Lesser Siren	[ ]	
	Marbled Salamander	[ ]	
	Mississippi Slimy Salamander	[ ]	
	Mole Salamander	[ ]	
	Smallmouth Salamander	[ ]	
	Southern Red Salamander	[ ]	

## Animal Checklist

	Animal	Check Off	Date
	<b>Amphibians</b>		
	<b>Salamanders:</b>		
	Southern Two-lined Salamander	[ ]	
	Spotted Dusky Salamander	[ ]	
	Spotted Salamander	[ ]	
	Three-lined Salamander	[ ]	
	Two-toed Amphiuma	[ ]	
	<b>Birds</b>		
	<b>Permanent Residents:</b>		
	American Crow	[ ]	
	American Kestrel	[ ]	
	American Oystercatcher	[ ]	
	Bachman's Sparrow	[ ]	
	Bald Eagle	[ ]	
	Barn Owl	[ ]	
	Belted Kingfisher	[ ]	
	Black Skimmer	[ ]	
	Black-bellied Plover	[ ]	
	Blue Jay	[ ]	
	Blue-winged Teal	[ ]	
	Brown Pelican	[ ]	
	Brown Thrasher	[ ]	
	Brown-headed Cowbird	[ ]	
	Brown-headed Nuthatch	[ ]	
	Carolina Chickadee	[ ]	
	Carolina Wren	[ ]	
	Caspian Tern	[ ]	
	Shipping Sparrow	[ ]	
	Clapper Rail	[ ]	
	Common Grackle	[ ]	
	Common Ground-Dove	[ ]	
	Common Tern	[ ]	
	Common Yellowthroat	[ ]	
	Cooper's Hawk	[ ]	
	Double-crested Cormorant	[ ]	
	Downy Woodpecker	[ ]	
	Eastern Bluebird	[ ]	
	Eastern Meadowlark	[ ]	
	Eastern Screech-Owl	[ ]	
	Eastern Towhee	[ ]	
	Eurasian Collared-Dove	[ ]	

## Animal Checklist

5

	Animal	Check Off	Date
	<b>Birds</b>		
	<b>Permanent Residents:</b>		
	European Starling**	[ ]	
	Forster's Tern	[ ]	
	Gray Catbird	[ ]	
	Great Blue Heron	[ ]	
	Great Egret	[ ]	
	Great Horned Owl	[ ]	
	Herring Gull	[ ]	
	Killdeer	[ ]	
	Laughing Gull	[ ]	
	Least Bittern	[ ]	
	Little Blue Heron	[ ]	
	Loggerhead Shrike	[ ]	
	Marsh Wren	[ ]	
	Mottled Duck	[ ]	
	Mourning Dove	[ ]	
	Northern Bobwhite	[ ]	
	Northern Cardinal	[ ]	
	Northern Flicker	[ ]	
	Northern Mockingbird	[ ]	
	Osprey	[ ]	
	Pied-billed Grebe	[ ]	
	Pileated Woodpecker	[ ]	
	Pine Warbler	[ ]	
	Reddish Egret	[ ]	
	Red-bellied Woodpecker	[ ]	
	Red-headed Woodpecker	[ ]	
	Red-shouldered Hawk	[ ]	
	Red-tailed Hawk	[ ]	
	Red-winged Blackbird	[ ]	
	Ring-billed Gull	[ ]	
	Rock Pigeon	[ ]	
	Royal Tern	[ ]	
	Sanderling	[ ]	
	Seaside Sparrow	[ ]	
	Snowy Egret	[ ]	
	Tri-colored Heron	[ ]	
	Tufted Titmouse	[ ]	
	White-eyed Vireo	[ ]	
	Wild Turkey	[ ]	
	Willet	[ ]	
	Wood Duck	[ ]	

# Animal Checklist

	Animal	Check Off	Date
	<b>Birds</b>		
	<b>Summer Birds:</b>		
	Anhinga	[ ]	
	Barn Swallow	[ ]	
	Black-crowned Night-Heron	[ ]	
	Blue Grosbeak	[ ]	
	Blue-gray Gnatcatcher	[ ]	
	Cattle Egret	[ ]	
	Chimney Swift	[ ]	
	Common Nighthawk	[ ]	
	Easter Wood-Pewee	[ ]	
	Eastern Kingbird	[ ]	
	Great Crested Flycatcher	[ ]	
	Green Heron	[ ]	
	Hooded Warbler	[ ]	
	Indigo Bunting	[ ]	
	Least Tern	[ ]	
	Magnificent Frigatebird	[ ]	
	Mississippi Kite	[ ]	
	Orchard Oriole	[ ]	
	Prothonotary Warbler	[ ]	
	Purple Martin	[ ]	
	Red-eyed Vireo	[ ]	
	Ruby-throated Hummingbird	[ ]	
	Sandwich Tern	[ ]	
	Summer Tanager	[ ]	
	Turkey Vulture	[ ]	
	White Ibis	[ ]	
	Wilson's Plover	[ ]	
	Wood Thrush	[ ]	
	Yellow-billed Cuckoo	[ ]	
	Yellow-crowned Night-Heron	[ ]	
	<b>Migrant Birds:</b>		
	Acadian Flycatcher	[ ]	
	American Avocet	[ ]	
	American Redstart	[ ]	
	Baltimore Oriole	[ ]	
	Bank Swallow	[ ]	
	Barn Swallow	[ ]	
	Black-and-white Warbler	[ ]	
	Black-throated Green Warbler	[ ]	
	Blue Grosbeak	[ ]	
	Blue-gray Gnatcatcher	[ ]	

## Animal Checklist

	Animal	Check Off	Date
	<b>Birds</b>		
	<b>Migrant Residents:</b>		
	Blue-winged Warbler	[ ]	
	Broad-winged Hawk	[ ]	
	Canada Warbler	[ ]	
	Cedar Waxwing	[ ]	
	Cerulean Warbler	[ ]	
	Chestnut-sided Warbler	[ ]	
	Chimney Swift	[ ]	
	Chuck-will's-widow	[ ]	
	Cliff Swallow	[ ]	
	Common Nighthawk	[ ]	
	Dunlin	[ ]	
	Easter Wood-Pee-wee	[ ]	
	Eastern Kingbird	[ ]	
	Gray-cheeked Thrush	[ ]	
	Greater Yellowlegs	[ ]	
	Hooded Warbler	[ ]	
	Indigo Bunting	[ ]	
	Kentucky Warbler	[ ]	
	Least Sandpiper	[ ]	
	Lesser Yellowlegs	[ ]	
	Magnolia Warbler	[ ]	
	Merlin	[ ]	
	Northern Parula	[ ]	
	Northern Rough-winged Swallow	[ ]	
	Orchard Oriole	[ ]	
	Ovenbird	[ ]	
	Painted Bunting	[ ]	
	Palm Warbler	[ ]	
	Pectoral Sandpiper	[ ]	
	Peregrine Falcon	[ ]	
	Philadelphia Vireo	[ ]	
	Prairie Warbler	[ ]	
	Prothonotary Warbler	[ ]	
	Purple Martin	[ ]	
	Red Knot	[ ]	
	Red-eyed Vireo	[ ]	
	Rose-breasted Grosbeak	[ ]	
	Ruby-throated Hummingbird	[ ]	
	Scarlet Tanager	[ ]	
	Semipalmated Sandpiper	[ ]	
	Sharp-shinned Hawk	[ ]	
	Summer Tanager	[ ]	



# Animal Checklist

	Animal	Check Off	Date
	<b>Birds</b>		
	<b>Migrant Residents:</b>		
	(Continued)		
	Swainson's Thrush	[ ]	
	Swainson's Warbler	[ ]	
	Tennessee Warbler	[ ]	
	Tree Swallow	[ ]	
	Western Sandpiper	[ ]	
	Whip-poor-will	[ ]	
	Wilson's Warbler	[ ]	
	Wood Thrush	[ ]	
	Worm-eating Warbler	[ ]	
	Yellow Warbler	[ ]	
	Yellow-billed Cuckoo	[ ]	
	Yellow-rumped Warbler	[ ]	
	Yellow-throated Vireo	[ ]	
	Yellow-throated Warbler	[ ]	
	Yellow Warbler	[ ]	
	<b>Butterflies</b>		
	<b>Common Butterflies:</b>		
	Palamedes Swallowtail	[ ]	
	Cloudless Sulfur	[ ]	
	Little Yellow	[ ]	
	Gray Hairstreak	[ ]	
	Red-banded Hairstreak	[ ]	
	Gulf Fritillary	[ ]	
	Pearl Crescent	[ ]	
	Common Buckeye	[ ]	
	Carolina Satyr	[ ]	
	Monarch	[ ]	
	Silver-spotted Skipper	[ ]	
	Horace's Duskywing	[ ]	
	Fiery Skipper	[ ]	
	Sachem	[ ]	
	Salt Marsh Skipper	[ ]	
	Ocola Skipper	[ ]	
	Red Spotted Purple	[ ]	
	Variiegated Fritillary	[ ]	
	Painted Lady	[ ]	



# Animal Checklist

	Animal	Check Off	Date
	<b>Reptiles</b>		
	<b>Turtles/Tortoises:</b>		
	Eastern Mud Turtle	[ ]	
	Gopher Tortoise	[ ]	
	Gulf Coast Box Turtle	[ ]	
	Gulf Coast Spiny Softshell Turtle	[ ]	
	Kemp's Ridley Sea Turtle	[ ]	
	Loggerhead Sea Turtle	[ ]	
	Loggerhead Snapping Turtle	[ ]	
	Mississippi Mud Turtle	[ ]	
	Red-eared Slider	[ ]	
	Three-toed Box Turtle	[ ]	
	Yellowbelly Slider	[ ]	
	Yellow-blotched Map Turtle	[ ]	
	<b>Lizards:</b>		
	Broadhead Skink	[ ]	
	Eastern Glass Lizard	[ ]	
	Five-lined Skink	[ ]	
	Green Anole	[ ]	
	Ground Skink	[ ]	
	Mediterranean Gecko**	[ ]	
	Mimic Glass Lizard	[ ]	
	Six-lined Racerunner	[ ]	
	Southeastern Five-lined Skink	[ ]	
	Southern Fence Lizard	[ ]	
	<b>Snakes:</b>		
	Banded Water Snake	[ ]	
	Black Pine Snake	[ ]	
	Broad-banded Water Snake	[ ]	
	Corn Snake	[ ]	
	Cottonmouth (Moccasin)****	[ ]	
	Diamondback Water Snake	[ ]	
	Eastern Coach Whip	[ ]	
	Eastern Coral Snake****	[ ]	
	<b>**** Poisonous (venomous) --- exercise extreme caution</b>		

## Animal Checklist

	Animal	Check Off	Date
	<b>Reptiles</b>		
	<b>Snakes:</b>		
	(Continued)		
	Eastern Diamondback Rattlesnake****	[ ]	
	Eastern Garter Snake	[ ]	
	Eastern Hognose Snake	[ ]	
	Eastern Indigo Snake	[ ]	
	Eastern Ribbon Snake	[ ]	
	Florida Red-bellied Snake	[ ]	
	Gray Rat Snake	[ ]	
	Gulf Crayfish Snake	[ ]	
	Gulf Salt Marsh Snake	[ ]	
	Marsh Brown Snake	[ ]	
	Midland Water Snake	[ ]	
	Mississippi Green Water Snake	[ ]	
	Mississippi Ringneck snake	[ ]	
	Mole Snake	[ ]	
	Mud Snake	[ ]	
	Pigmy Rattlesnake****	[ ]	
	Pinewoods Snake	[ ]	
	Rainbow Snake	[ ]	
	Rough Earth Snake	[ ]	
	Rough Green Snake	[ ]	
	Scarlet King Snake	[ ]	
	Southeastern Crowned Snake	[ ]	
	Southern Black Racer	[ ]	
	Southern Copperhead****	[ ]	
	Southern Hognose Snake	[ ]	
	Speckled King Snake	[ ]	
	Western Smooth Earth Snake	[ ]	
	Yellow-belly Water Snake	[ ]	
	<b>**** Poisonous (venomous) --- exercise extreme caution</b>		

## Plant Checklist

12

	Plant	Check Off	Date
	American Holly	[ ]	
	American Mistletoe	[ ]	
	American Persimmon	[ ]	
	Bald Cypress	[ ]	
	Barbara's Buttons	[ ]	
	Black Needlerush	[ ]	
	Blue Butterwort	[ ]	
	Blue-eyed Grass	[ ]	
	Bulltongue Arrowhead	[ ]	
	Buttonweed	[ ]	
	Camphortree**	[ ]	
	Chinese Tallow Tree**	[ ]	
	Clustered Sedge	[ ]	
	Coast Cockspur Grass	[ ]	
	Coastal Morning-glory	[ ]	
	Cogon Grass**	[ ]	
	Combleaf Merrmaidweed	[ ]	
	Common Goldenrod	[ ]	
	Crossvine	[ ]	
	Devil's Walking Stick	[ ]	
	Dog Fennel	[ ]	
	Drumhead	[ ]	
	Dwarf Milkwort	[ ]	
	Dwarf Sundew	[ ]	
	Eastern Redcedar	[ ]	
	Eryngo	[ ]	
	Fourpetal St. John's Wort	[ ]	
	Foxtail Grass	[ ]	
	Glasswort	[ ]	
	Grass Pink Orchid	[ ]	
	Groundsel Tree	[ ]	
	Gulf Muhly Grass	[ ]	
	Hairy Umbrella Sedge	[ ]	
	Hemp Sesbania	[ ]	
	Inkberry	[ ]	
	Japanese Honeysuckle**	[ ]	
	Japanese Climbing Fern**	[ ]	
	Largeleaf Marsh Pennywort	[ ]	
	Laurel Briar	[ ]	
	Little Bluestem	[ ]	
	Live Oak	[ ]	
	Loblolly Pine	[ ]	
	Longleaf Milkweed	[ ]	

## Plant Checklist

	Plant	Check Off	Date
	Longleaf Pine	[ ]	
	Marsh Elder	[ ]	
	Marsh Pink	[ ]	
	Meadow Beauty	[ ]	
	Mist Flower	[ ]	
	Muscadine	[ ]	
	Myrtle-leaved Holly	[ ]	
	Narrow-leaf Water Primrose	[ ]	
	Netted Chain Fern	[ ]	
	Orange Milkwort	[ ]	
	Pale Pitcher Plant	[ ]	
	Parrot's Beak Pitcher Plant	[ ]	
	Pecan	[ ]	
	Pickeralweed	[ ]	
	Pine Lily	[ ]	
	Poison Ivy****	[ ]	
	Pond Cypress	[ ]	
	Purple Pitcher Plant	[ ]	
	Rayless Goldenrod	[ ]	
	Red Maple	[ ]	
	Red Milkweed	[ ]	
	Redroot	[ ]	
	Rose Purslane	[ ]	
	Rosy Camphorweed	[ ]	
	Rough-stemmed Goldenrod	[ ]	
	Saltgrass	[ ]	
	Saltmarsh False Foxglove	[ ]	
	Saltmarsh Morning-glory	[ ]	
	Saltmarsh Bullrush	[ ]	
	Saltmeadow Cordgrass	[ ]	
	Savanna Honeycomb	[ ]	
	Saw Palmetto	[ ]	
	Sawgrass	[ ]	
	Sea Ox-eye	[ ]	
	Seaside Goldenrod	[ ]	
	Seven Sisters Lily	[ ]	
	Showy Rattlebox	[ ]	
	Sicklepod	[ ]	
	Slash Pine	[ ]	
	Smallfruit	[ ]	
	Smooth Cordgrass	[ ]	
	Southern Magnolia	[ ]	
	Spadeleaf	[ ]	



## **Field Notes and Drawings**



## **Field Notes and Drawings**

## **Field Notes and Drawings**

## **Field Notes and Drawings**

The reserve has thousands of acres of wildlands that support hundreds of species of plants and animals. Although most of the plants and animals are harmless, there are some that can cause harm if they bite, sting or rub up against you. As long as you exercise caution, you should have no problem with them. Many of these harmful interactions (except with the bugs) can be avoided if you stay out of the water and on the trails. Remember! The number one person responsible for your safety is YOU!

**Plants to avoid contact with:**

Poison Ivy

Remember! Leaflets three—leave it be.

Black Needlerush

Don't let it poke you in the eye.

**Animals to avoid contact with:**

Alligators

Poisonous Snakes

Jellyfish

Stingrays

Sharks

Louisiana Black Bears (rare)

Biting Bugs including: Ticks, Deer Flies,  
Mosquitoes and Gnats

**Please Do Not Feed the Wildlife!**



6005 Bayou Heron Road, Moss Point, MS 39562 Phone: 228.475.7047