

Grand Bay National Estuarine Research Reserve Dormitory Policy
Mississippi Department of Marine Resources
March 2010

The Grand Bay National Estuarine Research Reserve (NERR) Dormitory was established to provide support and accommodations to persons/groups conducting research, education and stewardship projects consistent with the conservation objectives of the NERR. This policy provides information on the use of the dormitory. Please contact the NERR office at 228-475-7047 for additional information.

A. Facility Description

The NERR dormitory is located at the Grand Bay Coastal Resources Center at 6005 Bayou Heron Road, Moss Point, MS 39562. The dormitory is air conditioned and consists of two bunk rooms which accommodate 8 persons each and 2 private double rooms. Each room has a shower, sink and toilet. The kitchen includes a refrigerator, stove, oven, microwave, dishwasher and kitchenware. A washer and dryer are also provided. A common area is available for dining and lounging. Wireless internet is available to those with a laptop computer. Users should plan to bring their own sheets/blankets/pillow cases or sleeping bag.

The dormitory is adjacent to the NERR offices, classrooms, laboratories and interpretative area. Contact the NERR office for more information about the use of these facilities.

B. Reservations

Advance reservations are required to stay in the NERR Dormitory and must be approved by the Reserve Manager or designee. Reservations may be made by completing the Dormitory Reservation Form and returning it via email to teresa.stadler@dmr.ms.gov or by fax to 228-475-8097. Reservations are not final until a confirmation is received from the NERR. Reservations are on a "first come-first served" basis.

Should you need to cancel your reservation, please do so as soon as possible.

Maximum length of stay in the dormitory is two weeks, unless otherwise approved by the Reserve Manager.

C. Arrival and Checkout

Check in and check out of the dormitory is at the NERR offices Monday through Friday between 8 a.m. and 4 p.m. First time users of the facility must also sign a liability release at check in. Keys or combinations to the dormitory can be obtained at the office. The NERR is closed during all official State of Mississippi holidays. Special arrangements for check in and checkout may be considered on a case by case basis.

D. Facility Use, Maintenance and Rules

1. No alcoholic beverages or illegal drugs are permitted on the premises.
2. No Firearms or fireworks are allowed.
3. No smoking is allowed within the dormitory or on the premises.

4. All food and beverage must be removed from the premises upon departure.
5. All trash should be collected in containers provided. Trash bags are available in the laundry room for your use. Full trash bags should be emptied in the outside rolling containers in the back parking area as needed.
6. Recycling containers are available for your use. Please wash all glass, plastic and metal recyclables.
7. Leave the dormitory in the condition you found it.
8. Cleaning supplies and tools are for your use in the laundry room and below the kitchen sink. Please clean up behind yourself.
9. Guests should sweep the floors daily and as needed. If mud is tracked inside, please mop the floors as well.
10. All dishes, utensils and cookware should be washed and put away after use.
11. Do not move furniture from room to room or put mattresses on the floor.
12. Please turn off lights and appliances when not in use.
13. Please leave all books, magazines, posters, maps or videos on site. You are welcome to add to the collection for others.
14. Telephones are not available for your use in the dormitory. If you need to make calls, plan to use a personal cell phone.
15. Wireless internet is available. Access codes will be provided at check-in.
16. Please keep dormitory doors and compound gate locked when you are not present.
17. No flammable liquids should be stored inside the facility.
18. Please be considerate of other groups/individuals during your stay.

Failure to comply with these rules may revoke your privilege to use the dormitory in the future.

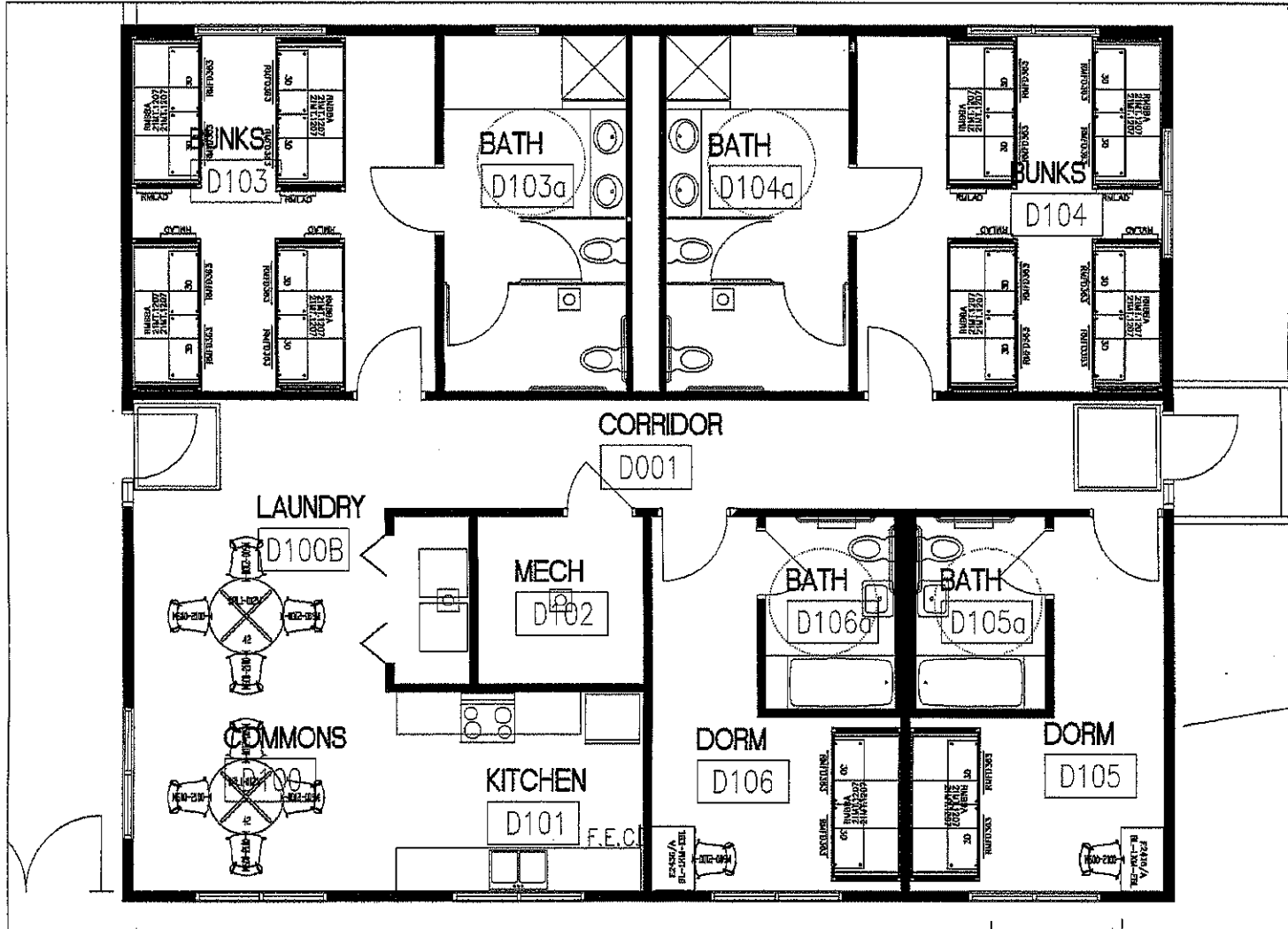
E. Donations

Fee donations are \$10.00 per person per night.

Payment must be received at least one week in advance. Cash or check only. Checks should be made payable to: Mississippi Department of Marine Resources and can be made at the NERR offices or my mail to: Grand Bay NERR, att. Facility Donation, 6005 Bayou Heron Rd., Moss Point, MS 39652.

Grand Bay NERR Dormitory

North



West

East

Gate

South